

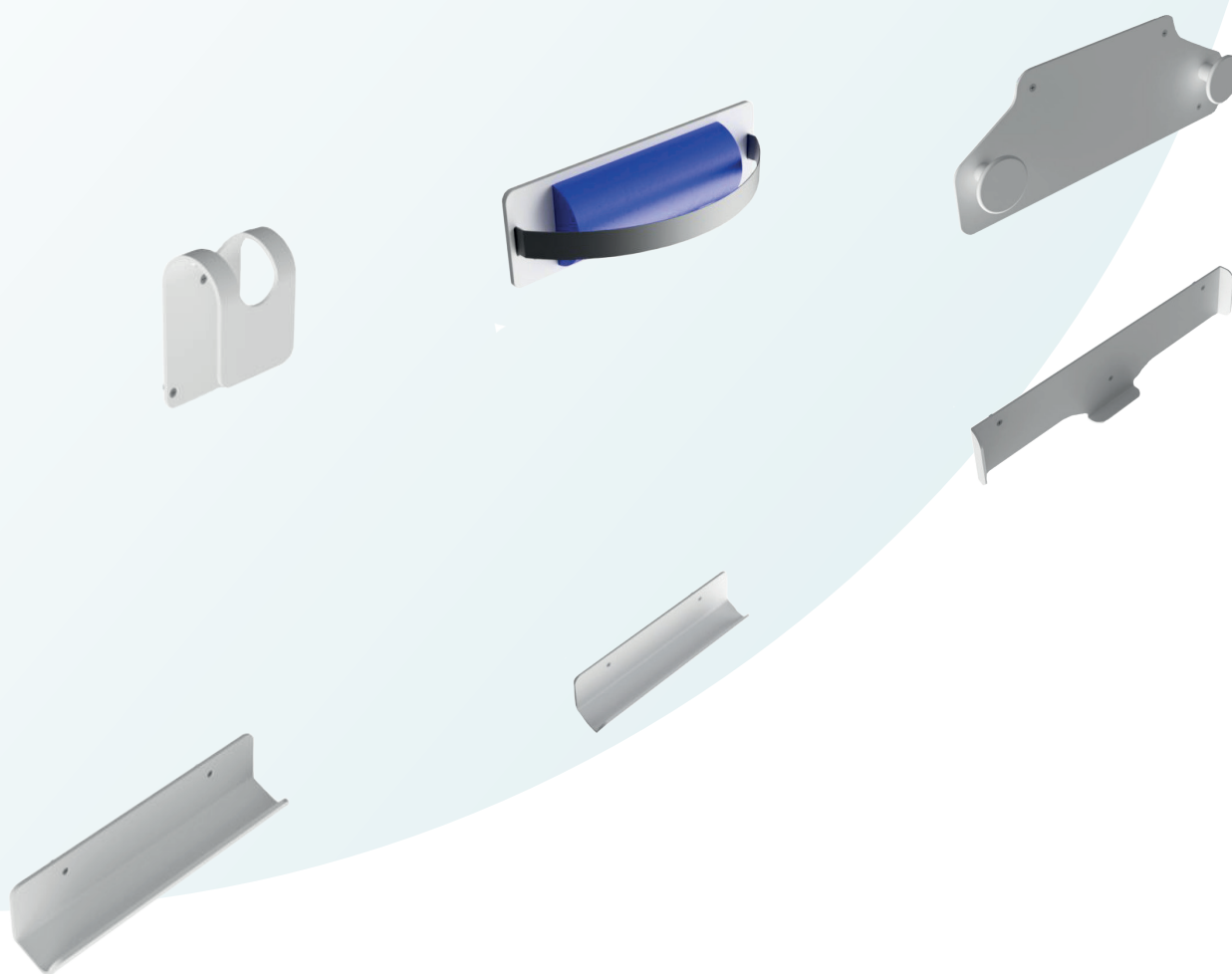


macromedics

SOLUTIONS IN RADIOTHERAPY

MANUAL 151100
Instructions for use
English Instructions

MacroMedics® Storage Systems



MacroMedics BV

Oostbaan 670
2841 ML Moordrecht
The Netherlands
+31 (0) 182 389 777
info@macromedics.com
www.macromedics.com

Table of Contents

1. Warnings.....	3
2. MRI Safety Information.....	3
3. Use.....	3
4. Types of Storage Systems.....	4
5. Installation Instructions.....	5
6. Disposal.....	6
7. Warranty.....	6

1. Warnings



- Inspect the product thoroughly before use. Do not use the product if damaged or if missing parts.
- Only install the product as described in the instructions.
- Supplied screws are made out of metal, do not use in the MR environment.
- Place the storage system in a safe position on the wall to prevent a bed or person to bump into the product.

2. MRI Safety Information

MR UNSAFE

The following products are MR Unsafe:

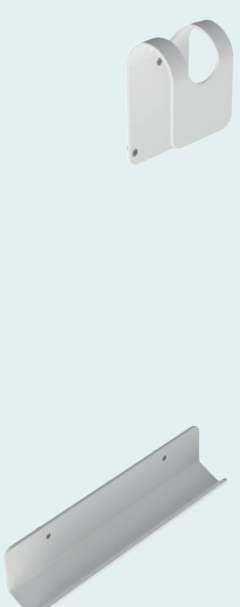
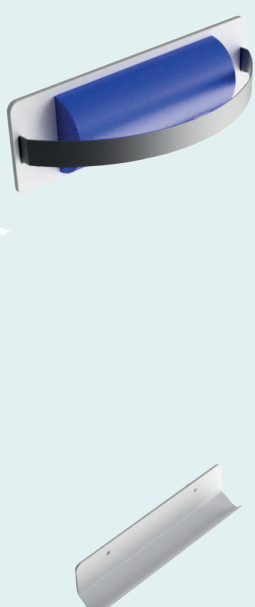
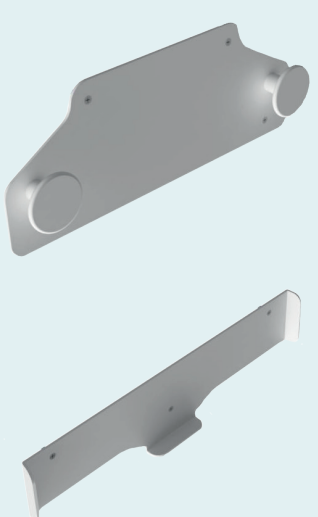
- 151100 Storage System Universal
- 151200 Storage System CT Couchtop
- 151300 Storage System PPB



3. Use

The vertical storage of MacroMedics Baseplates.

4. Types of Storage Systems

151100 SSUV UNIVERSAL STORAGE SYSTEM FOR SMALL PRODUCTS	151200 SSCT STORAGE SYSTEM FOR SBRT & CT	151300 SSPPB STORAGE SYSTEM FOR PELVIC PRONE BOARD
		

THE ABOVE STORAGE SYSTEMS ARE APPLICABLE TO THE FOLLOWING PRODUCTS:

'SMALL PRODUCTS'	'SBRT & CT'	'PELVIC PRONE BOARD'
<ul style="list-style-type: none"> BreastBoard ThoraxSupport ThoraxSupport Short MammaBoard Lex Ultra UniqFix ExaFix 5, 3, 5A, 3A IMRT Baseplates LEPS SSPS Baseplates EAMIS Lite Pelvic Plate BreastBoard EX + EagleBoard-2 	<ul style="list-style-type: none"> OmniBoard MultiBoard All CT-PET & MRT Tops 	<ul style="list-style-type: none"> Pelvic Prone Board

5. Installation Instructions

5.1 ASSEMBLY OF THE UNIVERSAL STORAGE SYSTEM (151100)

- Choose a safe, clean and dry place on the wall.
- Determine a comfortable height for the device to be hung onto the wall.
- Mark the screwholes on the wall where the lower part of the storage system should be placed, drill and mount.
- Rest the MacoMedics baseplate onto the mounted lower part of the storage system.
- Place the upper part of the storage system above the baseplate, so that the baseplate has a snug fit, but can be easily taken out and placed back into the storage system. Have a second person to help with this. (image 5.1.1)
Note: For storing the BreastBoard EX with EagleBoard-2 in this storage system, Rotate the upper part of the storage system with 180 degrees when mounting it to the wall. (image 5.1.2)
- When the position is correct, screw the upper part onto the wall.

Image 5.1.1

Regular mounting position

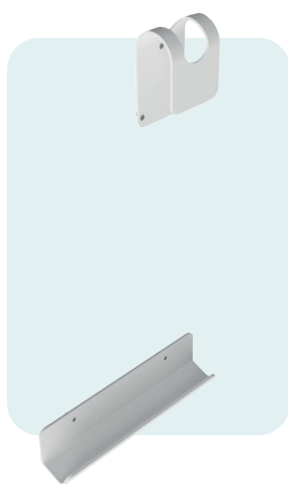


Image 5.1.2

Mounting position specifically
for the BreastBoard EX & EagleBoard-2



5.2 ASSEMBLY OF THE SBRT & CT STORAGE SYSTEM (151220)

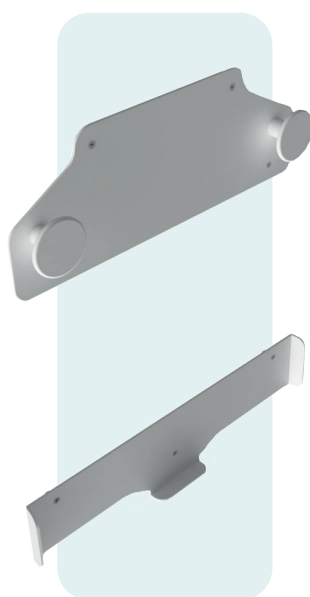
For the CT/PET/MR couchtops and SBRT plates

- Choose a safe, clean and dry place on the wall.
- Mount the lower part at knee height.
- Rest the baseplate onto the lower part of the mounted storage system and determine the correct position for the upper part.
- Mount the upper part onto the wall. Drilling through the belt is permitted.
- Place the Baseplate in the storage system and adjust the belt length when necessary.



5.3 ASSEMBLY OF THE PELVIC PRONE BOARD STORAGE SYSTEM

- Choose a safe, clean and dry place on the wall.
- Position the top part of the storage system against the wall, a little above eye height.
- Mark the screwholes on the wall and mount the top part of the storage system.
- Hang the Pelvic Prone Board onto the mounted top part.
- Place the lower part of the storage system underneath the baseplate so that the bottom of the baseplate rests on it.
- Have a second person remove the Pelvic Prone Board and screw the lower part on the wall.



6. Disposal

Dispose of the product in accordance with the local laws and regulations applicable to your country.

7. Warranty

The MacroMedics products are warranted to be free from defects in manufacturing, material and construction. The warranty is for 1 year starting from the date of delivery.

Product warranties remain valid provided the product was installed and/or used according to the instructions. Defects, malfunctions or failures caused by nature, misuse, abuse and unauthorised alteration or repair are not warranted.

This warranty is limited to the repair and/or replacement at the sole discretion of MacroMedics.



macromedics

SOLUTIONS IN RADIOTHERAPY

MacroMedics BV

Oostbaan 670
2841 ML Moordrecht
The Netherlands

+31 (0) 182 389 777

info@macromedics.com
www.macromedics.com

(Visit www.macromedics.com for a digital copy of this manual)



04032024V8IFU151100