



macromedics

SOLUTIONS IN RADIOTHERAPY

MANUAL 142000
Instructions for use
English Instructions

MacroMedics® CT CouchTops for GE cradles



MacroMedics BV

Oostbaan 670
2841ML Moordrecht
The Netherlands
+31(0)182-389777

info@macromedics.com
www.macromedics.com



[This page is intentionally left blank]

Table of Contents

1. Warnings.....	4
2. MRI Safety Information.....	4
3. Intended Use.....	4
4. Installation Instructions.....	5
5. Cleaning, Storage and Disposal.....	13
6. Warranty.....	13
7. Notices.....	13
8. Glossary of Symbols.....	14

1. Warnings



- Inspect the device thoroughly before use. Do not use the device if damaged or incomplete.
- Make sure the baseplate is correctly secured to the couch prior to use.
- Permissible working load must not exceed 300 kg (661lbs).
- Ensure that the patient's hands, arms and limbs do not hang over the side of the couchtop to avoid potential pinch points.
- In the USA, federal law restricts this device to sale by or on the order of a licensed healthcare practitioner.

2. MRI Safety Information

MR UNSAFE

The following devices are MR Unsafe:

- 142120 CT CouchTop
- 142320 CT Couchtop
- 142340 CT Couchtop
- 142420 CT Couchtop
- 142440 CT Couchtop



3. Intended Use

Positioning of the patient during radiotherapy and radiodiagnostics, including MR where indicated.

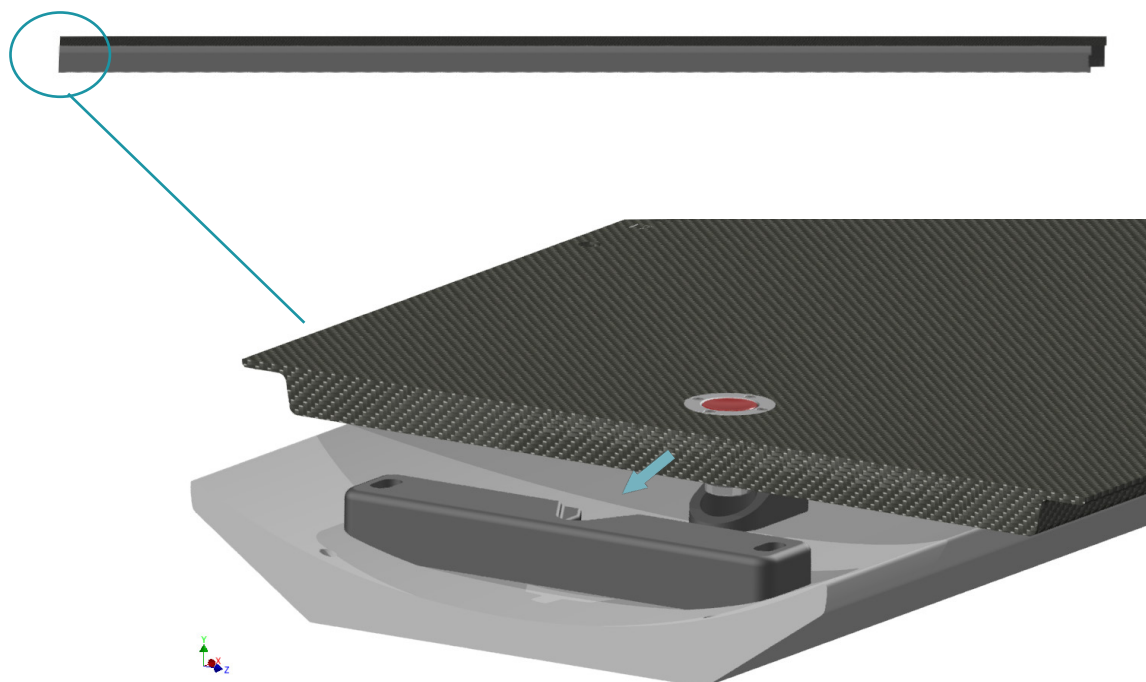
4. Installation Instructions

4.1 CouchTop installation for the **GE CT for Discovery MMCT 670 PRO** (CouchTop 142120)

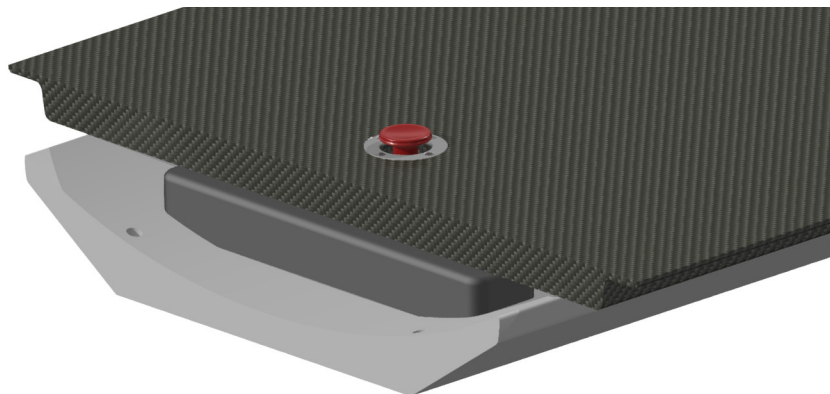
- I. Position the CouchTop above the cradle and carefully lower the CouchTop on the cradle.



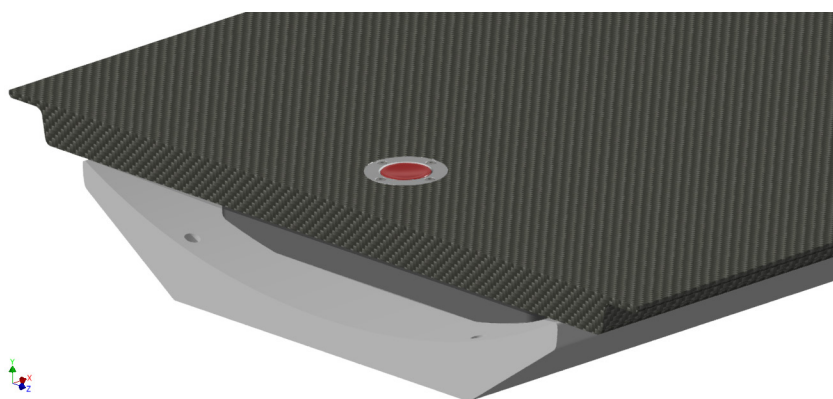
- II. Slide the CouchTop towards the caudal end.
Ensure that the cranial end fits into the opening in the cradle.
At the caudal end, confirm that the locking mechanism engages securely with the cradle block.



- II. As the CouchTop slides into the caudal block, the red button will be pushed upwards.

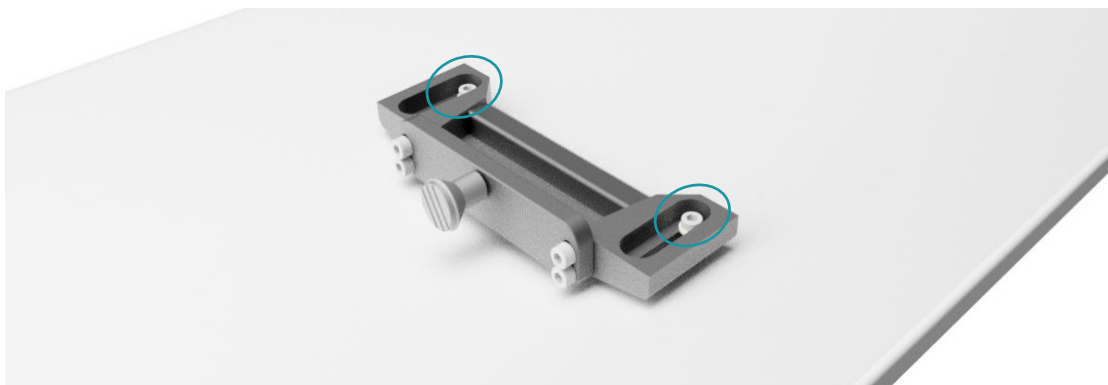


- III. Once the CouchTop is fully seated at the caudal end, the red button automatically lowers, securely locking the CouchTop to the cradle.



4.2 CouchTop installation for the **GE Discovery RT.** (CouchTops 142300, 142320, 142340 & 142420)

- I. Use an Allen key to screw the caudal cradle plate to the cradle at the caudal side.



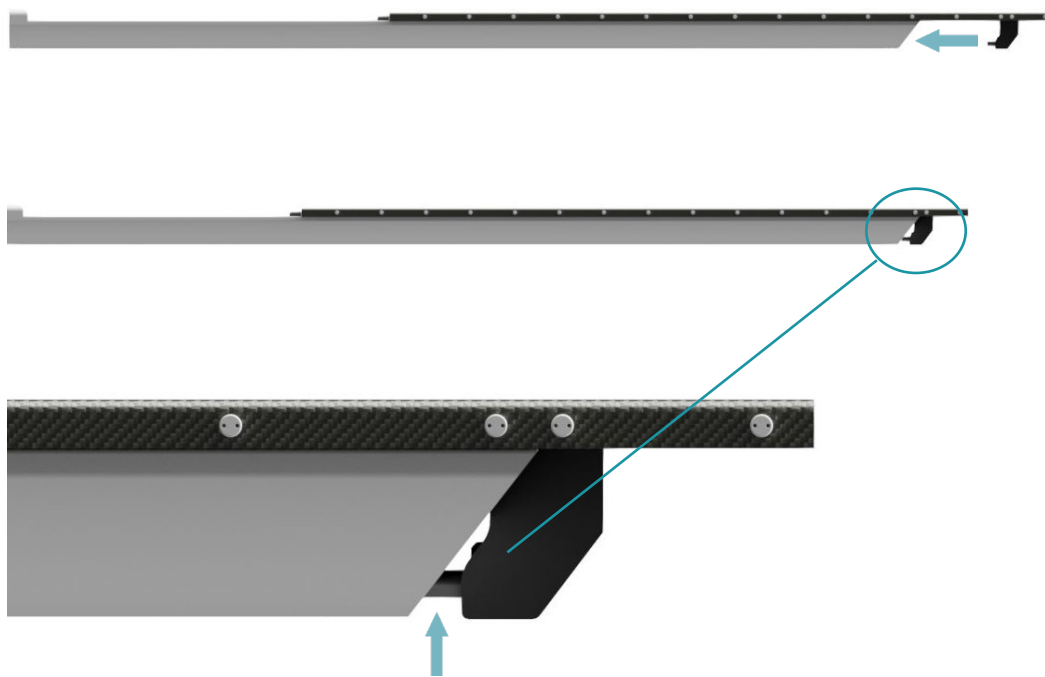
- II. Loosen the screws (circled) of the cranial block.



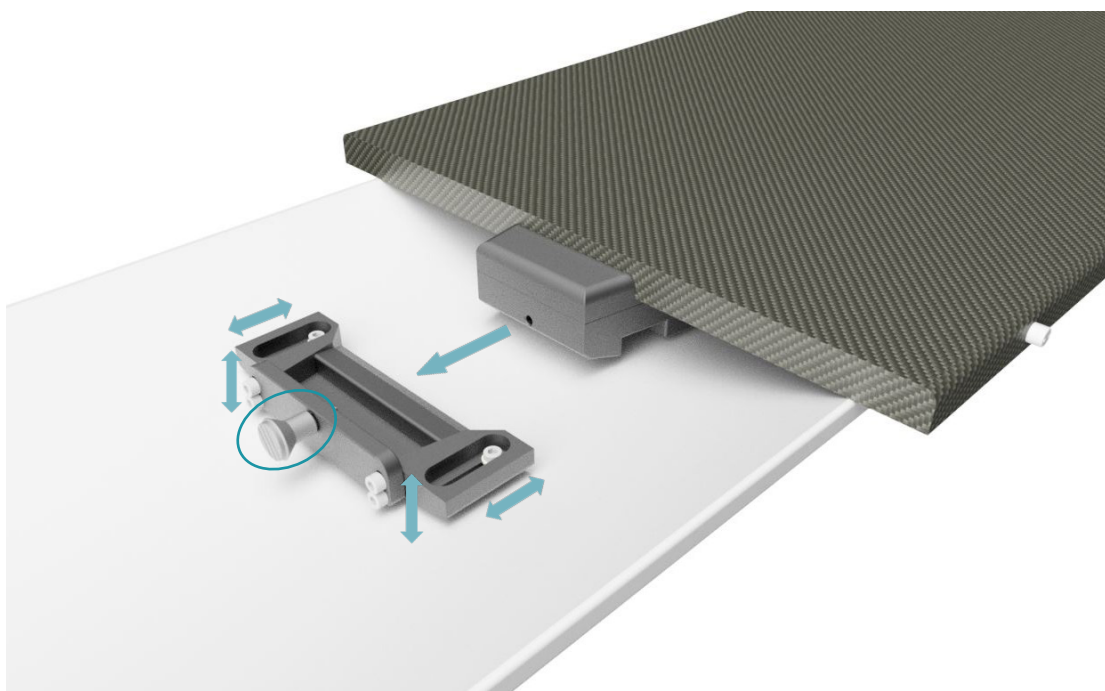
- III. Position the CouchTop above the cradle and carefully place the CouchTop on the cradle.

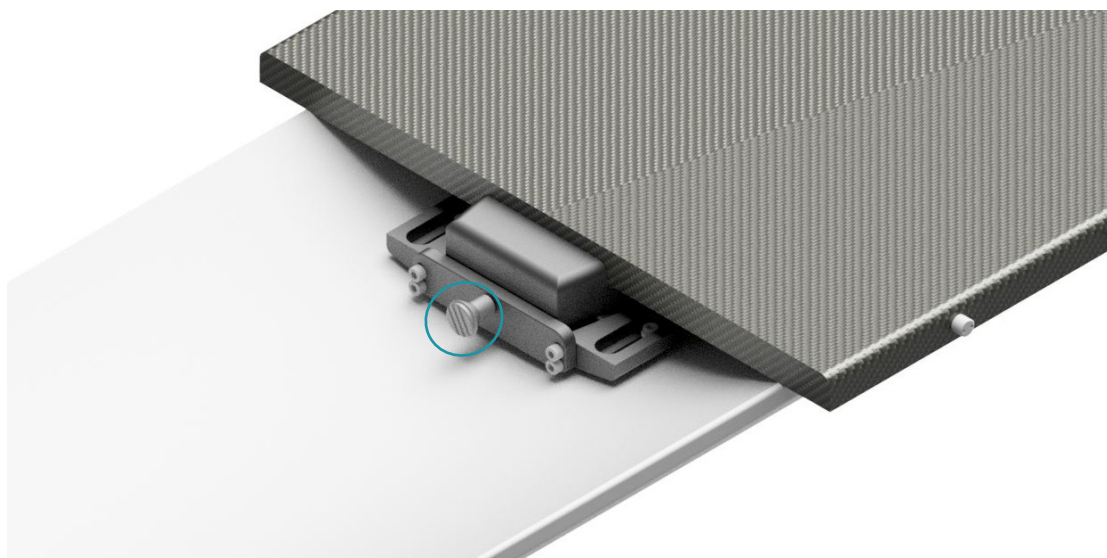


- IV. Slide the CouchTop towards the caudal side until it lays flat against the caudal cradle plate. Make sure that the cranial block slides in the cradle.



- V. Check if the indexing plunger (circled) is fixed in the caudal block of the CouchTop. If needed, adjust the indexing plunger in height by using an Allen key to loosen and tighten the screws of the caudal cradle plate.

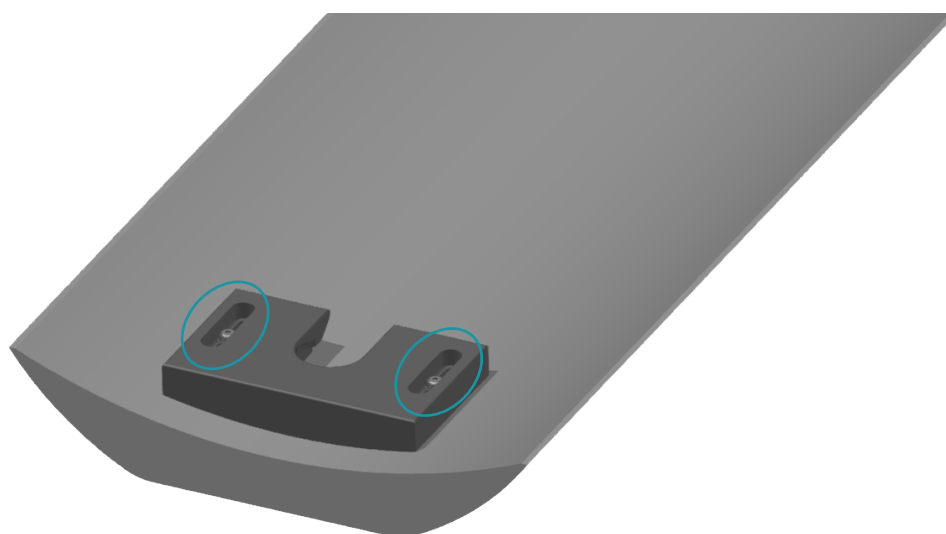




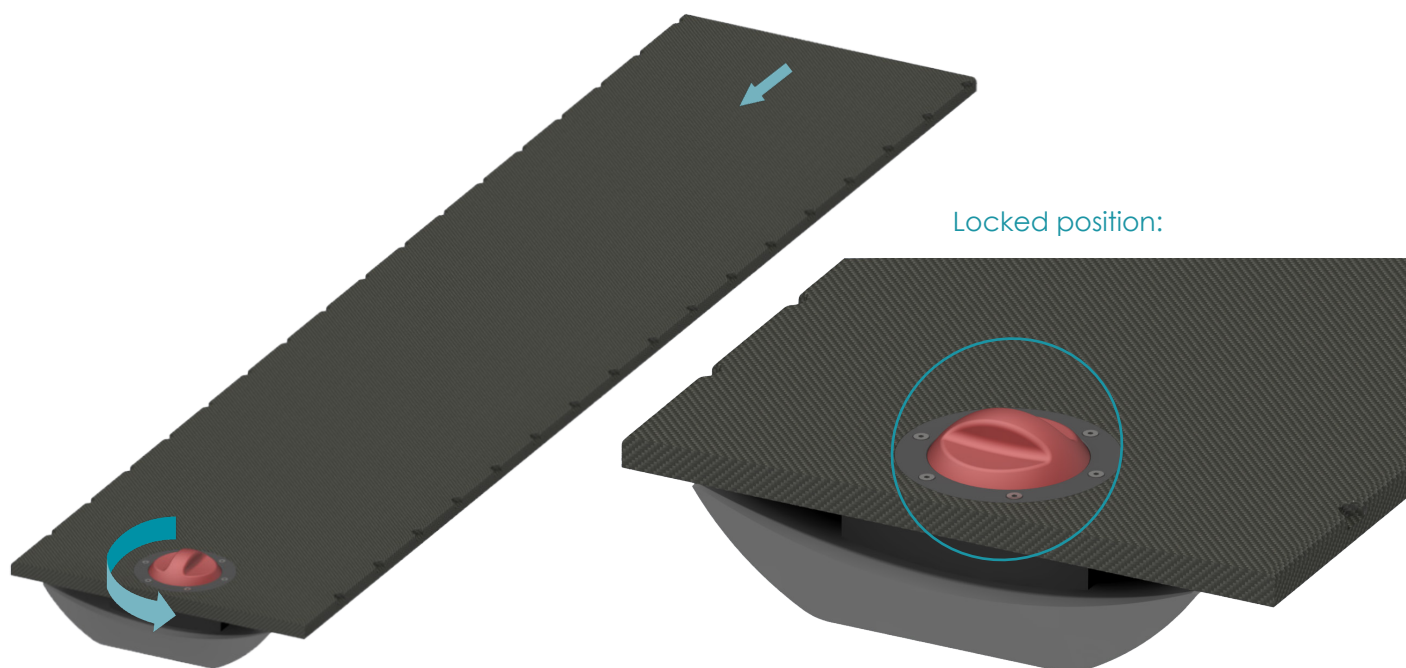
- VI. Tighten the screws from step 2, of the cranial block.

4.3 CouchTop installation for the **GE Discovery RT.** (CouchTop 142410)

- I. Screw the caudal cradle block onto the cradle in the designated holes with the corresponding screws and an Allen key.

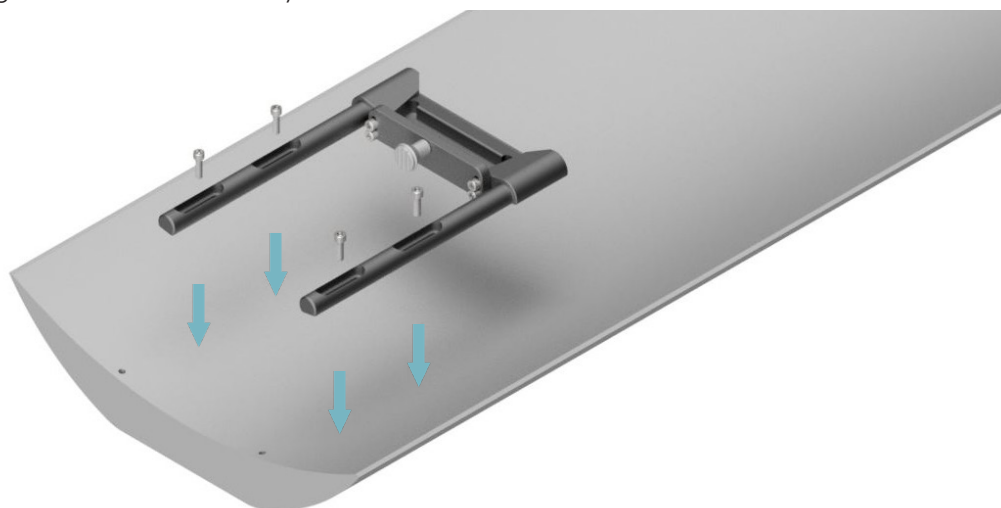


- II. Make sure that the red turning knob of the CouchTop is in released position (the grip is aligned in longitudinal direction with the CouchTop).
slide the CouchTop towards the caudal end of the cradle until the red turning knob clicks into the caudal cradle block.
- III. Turn the red knob 90 degrees anticlockwise to lock the CouchTop to the cradle.



4.4 CouchTop installation for the **GE Discovery ST, MI Indexing.** (CouchTop 142440)

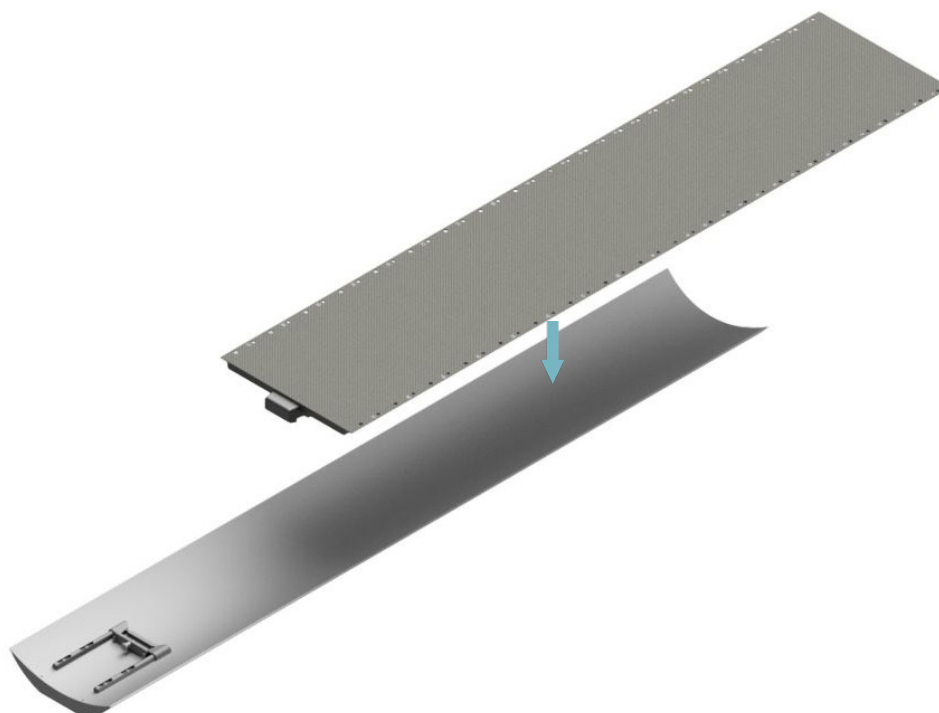
- I. Screw the caudal cradle block onto the cradle in the designated holes with the four corresponding screws and an Allen key.



- II. Loosen the screws from the cranial position block with an Allen key.

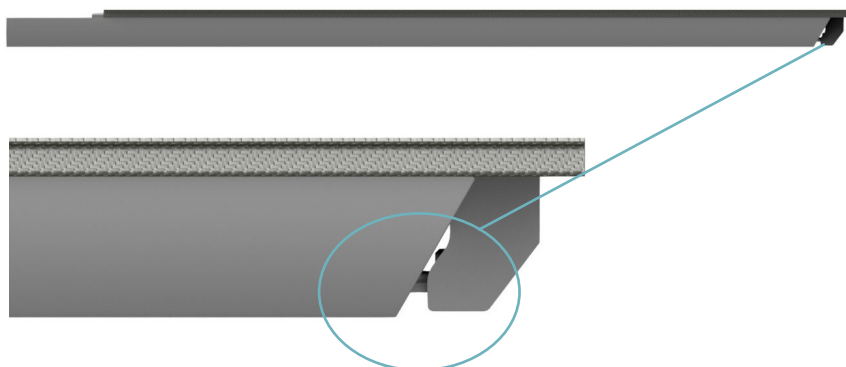


- III. Position the CouchTop above the cradle and place it carefully on the cradle.

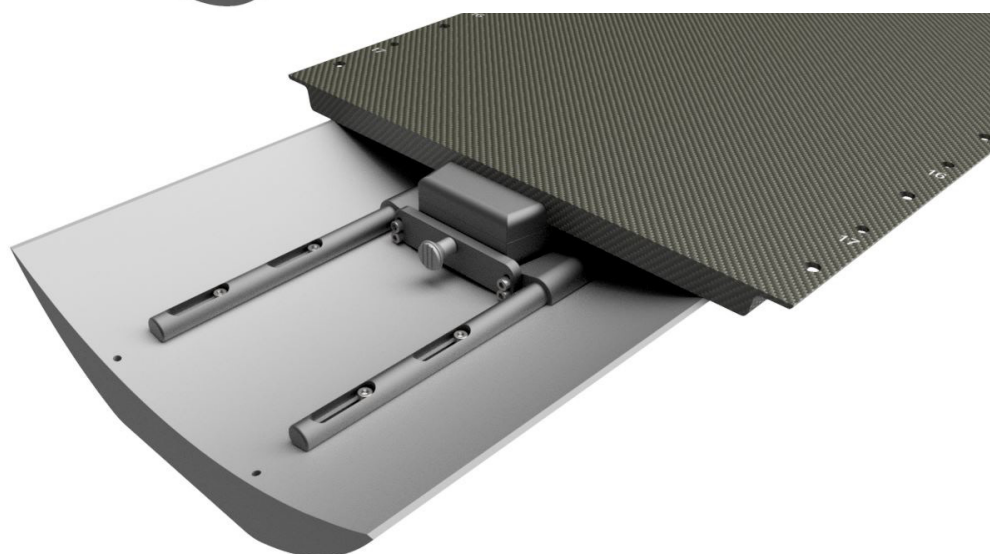
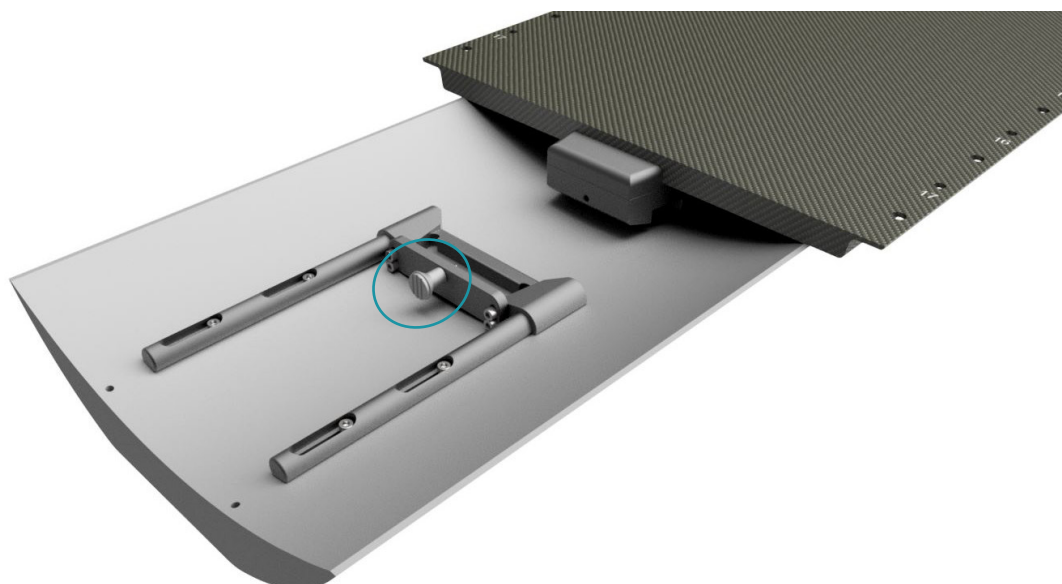


- IV. Slide the CouchTop towards the caudal end of the cradle until it lays flat against the caudal cradle block. Make sure that the cranial position block slides into the cradle.





- V. Check if the indexing plunger (circled) is fixed in the Caudal block of the CouchTop. If needed, adjust the Caudal block in longitudinal direction and/or the height of the indexing plunger.



- VI. Tighten the screws of the cranial position block, mentioned in step II.

5. Cleaning, Storage and Disposal

- Clean the device before and after every use with 70% Isopropanol or soapy water, applied with a soft cloth. Rinse with water and dry properly. Follow the cleaning precautions detailed on the bottle of the cleaning agent.
- If unsure about the cleaning fluid, do not use it. Never use Ethanol (Ethyl alcohol), aerosol sprays, corrosive cleaning agents, solvents or abrasive detergents.
- Make sure that there is no residue of the cleaning agent left on the device prior to use.
- The devices are not suitable for sterilization or thermal disinfection.
- Store the device in a clean, ventilated environment.
- Dispose of the device in accordance with the local laws and regulations applicable to your country.

6. Warranty

The MacroMedics products are warranted to be free from defects in manufacturing, material and construction. The warranty is for 1 year starting from the date of delivery.








Product warranties remain valid provided the product was installed and/or used according to the instructions. Defects, malfunctions or failures caused by nature, misuse, abuse and unauthorised alteration or repair are not warranted.

This warranty is limited to the repair and/or replacement at the sole discretion of MacroMedics.

7. Notices

Any serious incident that has occurred in relation to the device should be reported to the manufacturer and the competent authority of the Member State in which the user or patient is established.

8. Glossary of Symbols

Symbol	Symbol Name	Description of Symbol
	European Conformity	EC declaration of conformity by manufacturer.
	Manufacturer	Indicates the medical device manufacturer.
	Catalogue Number	Indicates the manufacturer's catalogue number so that the medical device can be identified.
 GS1 Code: (21)	Serial Number	Indicates the manufacturer's serial number so that a specific medical device can be identified.
	Consult Instruction for Use	Indicates the need for the user to consult the instructions for use.
	Caution	Indicates the need for the user to consult the instructions for use for important cautionary information such as warnings and precautions that cannot, for a variety of reasons, be presented on the medical device itself.
Rx ONLY	Prescription Only	Devices for sale to physicians or trained healthcare providers only.
	MR Unsafe	An item which poses unacceptable risks to the patient, medical staff or other persons within the MR environment.



[This page is intentionally left blank]



macromedics

SOLUTIONS IN RADIOTHERAPY

MacroMedics BV

Oostbaan 670
2841 ML Moordrecht
The Netherlands



+31 (0) 182 38 97 77

info@macromedics.com
www.macromedics.com

(Visit www.macromedics.com for a digital copy of this manual)



06102025V6IFU142000